

BPU8018P**VIP、Bank
Access Controller****Power over Ethernet****Magnetic stripe card, financial IC card****Time setting****Server VIP identity confirmation**

Power Over Ethernet



Supervisor



Wiegand & RS485 Reader compatible



MR600U

Features**Dielectric Diversity**

- Magnetic stripe card: old magnetic stripe card can be read correctly
- Financial IC card: the non-contact part is perfectly read, full play the new technical force

**Bank Card authorization**

- supporting the magnetic stripe cards of all Banks: bank of China, construction bank, icbc, agricultural bank, China merchants bank...
- support up to 10,000 bank cards and open the door after authorization

**Super speed**

- 100,000 capacity, within 0.1 second identified

**RS485 Card reader**

- Can connect the RS485 bus card reader, convenient wiring, save resources

**POE**

- The cat5/6 cable can supply power to the controller and the card reader, as well as the power supply to the current demand for small electrical locks

**linkage**

- Very flexible, programmable controlled linkage Settings that can be set between all input and output

**Online, offline mode**

- online: connect to the server; Offline: offline use, not connected to the server

Specifications

| | |
|-----------------------|--|
| CPU | 32 bits ARM® Cortex-M4 Processor |
| Card capacity | 30,000 users |
| Event capacity | 200,000 |
| Communication | TCP/IP 100M |
| PoE | 802.3 af |
| Card reader interface | ABA Magnetic stripe format RS485 card reader Wiegandcard reader |
| Temperature | - 20°C ~ 65°C |
| power supply | POE ; external power supply voltage : 12VDC ; Current≤0.3A (controller) , ≤3A (card reader) |
| Size (mm) | W138×H244×D33 (controller) W384 x H403 x D72 (metal box) |
| Certification | CE, FCC, RoHS, MA |

**Center confirmed door opening**

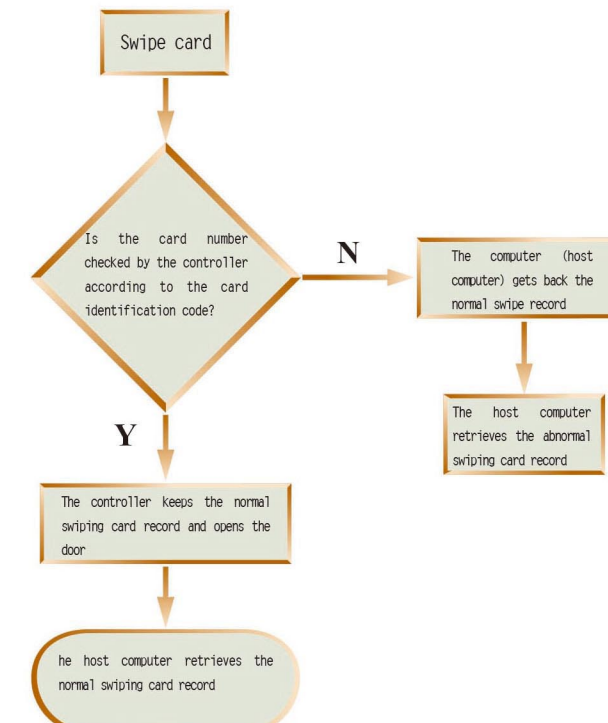
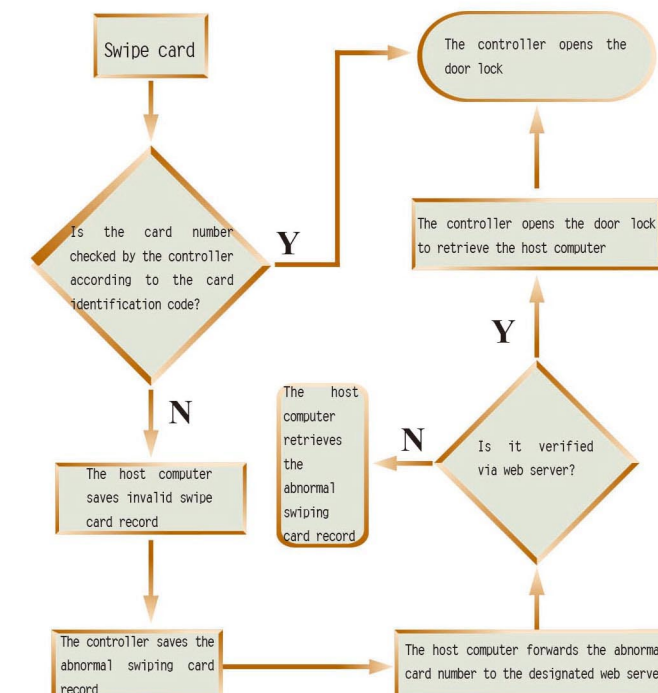
- The central server checks the VIP status and sends the door to the front controller after passing
- After receiving the credit card information, the central staff passed video comparison without incident, and then confirmed the second time.Can open the door

**The door state can be controlled**

- Normal mode: open the door after the card is authorized
- Timing control mode: door open, door often closed, dormant, time open

BPU8018P**VIP、Bank
Access Controller****Application 1: 24-hour self-service bank**

Put a magnetic stripe card in the doorway of the cafeteria, and everyone who enters the buffet hall must swipe the card before entering it. Through the management of software, we can record all the information of card number while entering and leaving, so as to prepare the query. The manager can also set the time control mode, for example: during the day, the door will be automatically sensitive, and the card verification function will be opened when night or security guard is on duty.

Working flow diagram**Working flow diagram****Application 2: bank VIP****(VIP status confirmed by bank Web server)**

Since the database of VIP card of each bank is changing, the Keyking self-service banking system also provides a secondary confirmation function.

After each swipe card, the system will receive the card number of the abnormal card to the enterprise Web server within the bank, and the Web server will be compared to the VIP customer after the card number is received.

If so, the Web server will send a signal to the Keyking system. The Keyking self-service banking system opens the door of the cardholder's swiping card after receiving the signal and records the card information.

If not, the Web server sends an illegal message, and the Keyking self-service banking system stores this information as "unusual swipe information" and does not open the door.