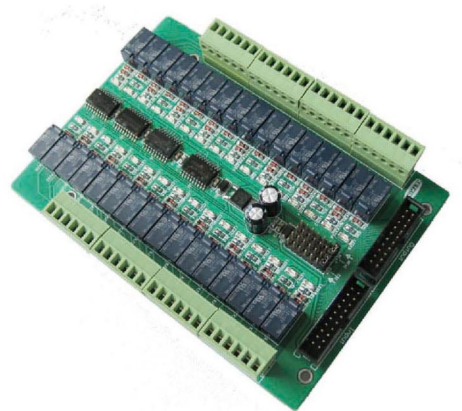


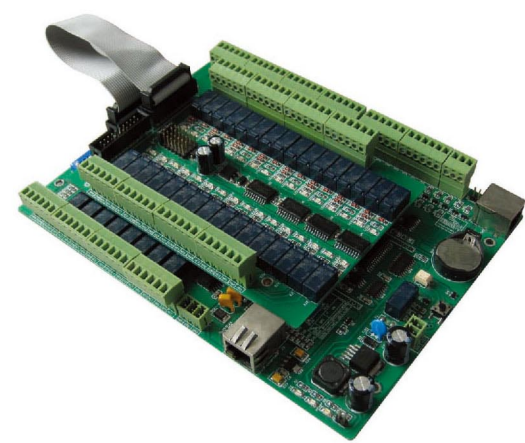
LPU8111 Elevator Control Expansion Board

Summary

The LPU8110NT, (KEYKING, 3 Series Elevator Controller, 16 Floors, 1 Reader, TCP/IP Enabled) is a fully intelligent Ethernet enabled controller based on a 8 bit microprocessor. It is compatible with both the V3.5 Economy and V4 Advanced range of KEYKING 3 Series access controllers (please refer to top left photo). The LPU8110 can by itself control 16 floors with no additional hardware.



LPU8111



LPU8110+LPU8111

Features

- LPU8111 cannot be used independently, only with LPU8110
- Each expansion board controls the 16-story elevator
- Relay output: 32 groups
- It is possible to determine whether the expansion board is online by the LPU8110 mainboard
- The expansion board can be directly controlled by LPU8110
- The state of each point is the same as that of the mainboard

Specification

- Extending floor: 16
- PCB dimension: 14 (L) ×10 (W) cm
- Operating Voltage: 12V DC (±10%)
- Working Temperature: -20℃-70℃
- Humidity: 5%-95%。

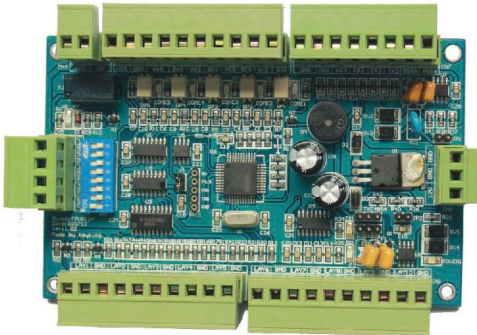
Order Information

LPU8111NT	16 Elevator Controller
Packing Information	<ul style="list-style-type: none"><li>■ LPU8111NT x1</li><li>■ Manual Specificationx1</li><li>■ QC Certificate x1</li></ul>

FPU8104 Floor Signal Collector

Features

- Floor signal acquisition
- Elevator control status collection
- Each board can be used for 10 floor elevators ,each with an extended plate To add 10 floors, the above control panel can be up to 128 floors
- The elevator is efficient management and control.
- Connect 16 floor harvesters
- Group 4 relay contact output
- Group 4 extended signal input



FPU8104

Order Information

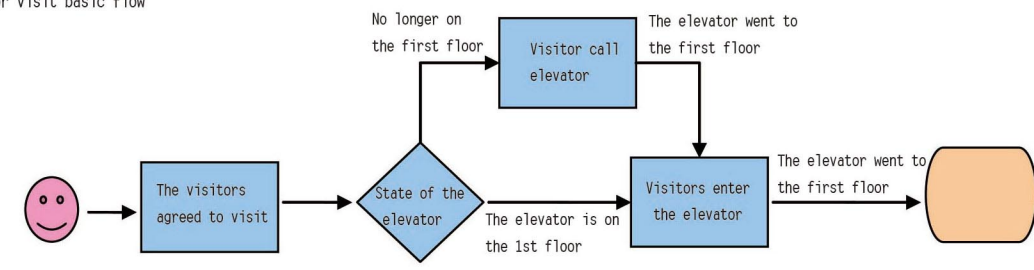
FPU8104	10 Floor Signal Collector
Packing Information	<ul style="list-style-type: none"><li>■ FPU8104 x1</li><li>■ Manual Specificationx1</li><li>■ QC Certificate x1</li></ul>

Specification

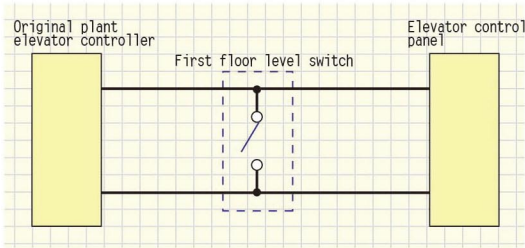
- CPU: 8 bit MCU CPU
- Operating Voltage: 9-12VDC
- Communication: RS485
- Terms of inspection: CRC
- Temperature: -20℃-70℃
- Humidity: 5%-95%。

Principle of floor collector structure

1. Visitor visit basic flow



2. Elevator control status collectionThe floor collecting board also needs to collect the operation state of each elevator.Extraction of elevator plane signals



Because there is no change in the control mode or circuit of the elevator in general, the elevator can not be affected by the above contact and normal operation, even if the system has lost power or other conditions.Of course, we also take multiple measures (such as the high reliability of switch power supply, input and output ports are equipped with noise suppressor, USES the hardware watchdog technology, the high reliability of the 485 communications, all communication data using CRC check, etc.) to ensure that the system will not drop and crash.